



GCGCD NEWS



SUMMER 2017 Newsletter

ALJ Adopts Schedule

A procedural schedule has been outlined from the TCEQ decision to remand Post Oak's application back to SOAH. Testimony and exhibit deadlines, followed by motions and objection deadlines will run through the end of this calendar year. A prehearing conference date of January 11, 2018 will address any pending motions and objections to pre-filed testimony. At that time, the ALJ may assign time limits, if deemed necessary, to complete the hearing in the four days allotted.

The hearing on the merits will be held **January 16 – 19, 2018**. The hearing will convene at **9:00 am** at SOAH, William P. Clements State Office Building, 300 West 15th Street, Fourth Floor, Austin, Texas.

SOAH Docket NO. 582-15-2498
TCEQ Docket NO. 2012-0905-MSW

IN THIS ISSUE

Legislative Updates – pg. 2
Production – pg. 3
Rainfall Data - pg. 3
Hurricane Season - pg.4
USGS weather app – pg. 5
Weather -Texmesonet – pg. 5
Stage 1 Conservation – pg. 6
Aquifer Levels – pg. 7
Upcoming Events – pg. 8
Did you know? – pg. 8



WWW.GCGCD.ORG



Legislative Results



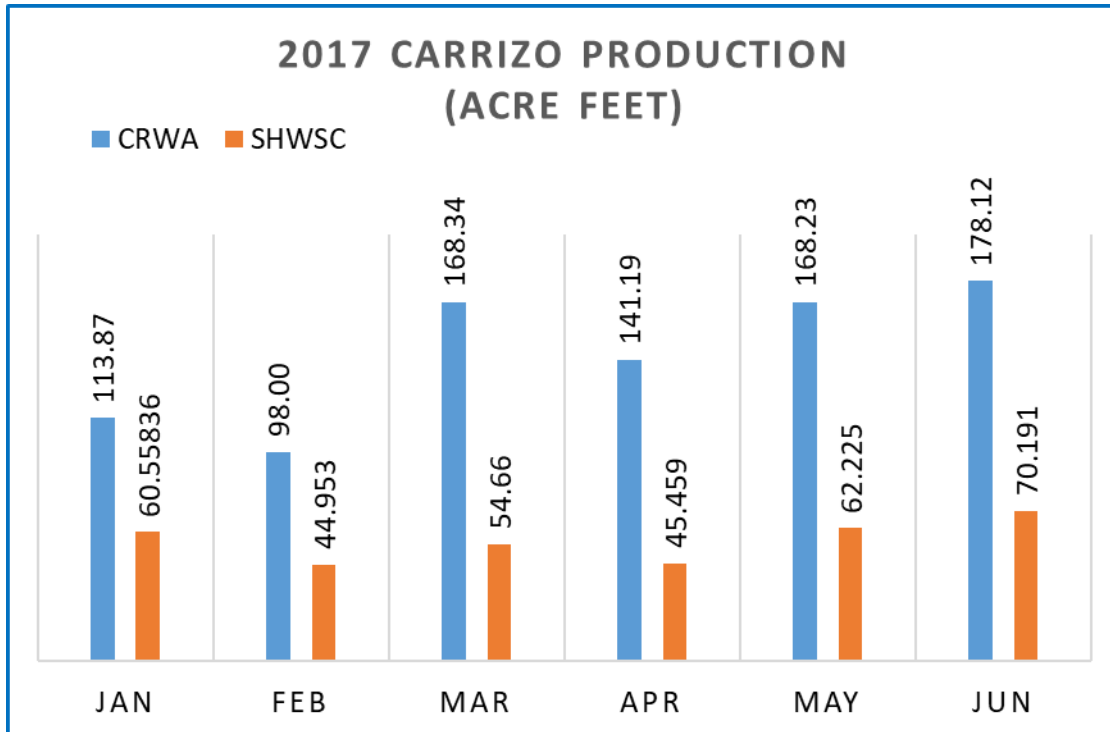
<u>HB 2215</u>	Effective 6/9/17	Relating to the adoption of desired future conditions for aquifers in groundwater management areas and the consideration of those conditions in the regional water planning process.
<u>SB 1009</u>	Effective 6/9/17	Relating to administrative completeness requirements for permit and permit amendment applications for GCDs.
<u>SB 865</u>	Effective 6/9/17	Relating to a groundwater conservation district's use of electronic fund transfer.
<u>SB 864</u>	Effective 6/9/17	Relating to the procedure for obtaining a right to use state water if the applicant proposes an alternative source of water that is not state water.
<u>SB 1511</u>	Effective 9/1/17	Relating to the state and regional water planning process and the funding of projects included in the state water plan.

Didn't make it

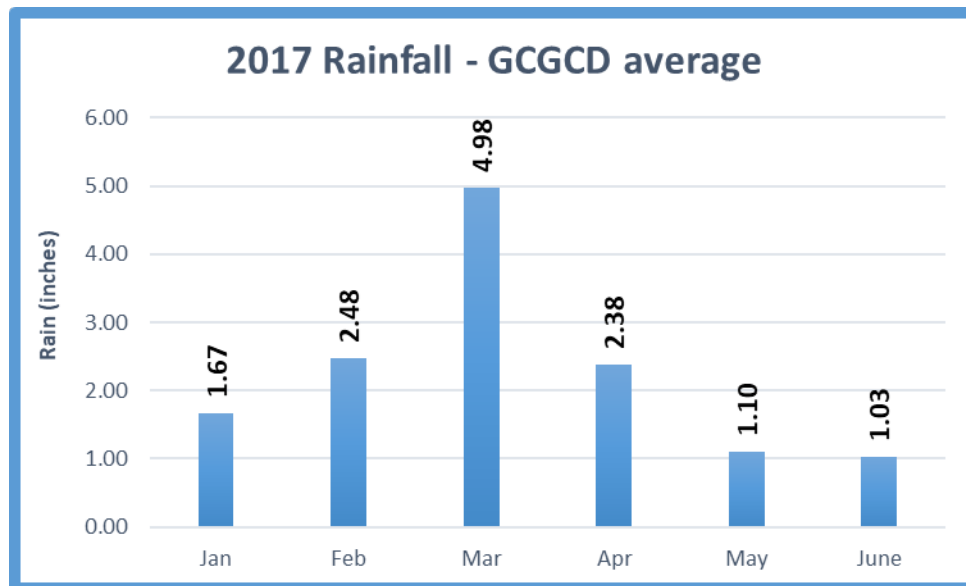


<u>SB 1525</u>	<u>VETOED</u>	Relating to a study by TWDB of water needs and availability in Texas.
<u>HB 2377</u>	<u>VETOED</u>	Relating to the development of brackish groundwater.
<u>HB 2378</u>	<u>VETOED</u>	Relating to extensions of an expired permit for the transfer of groundwater from a GCD
<u>HB 3025</u>	<u>VETOED</u>	Relating to open, uncovered, abandoned, or deteriorated wells.

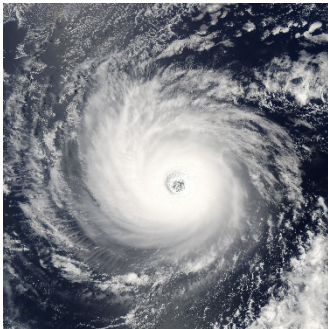
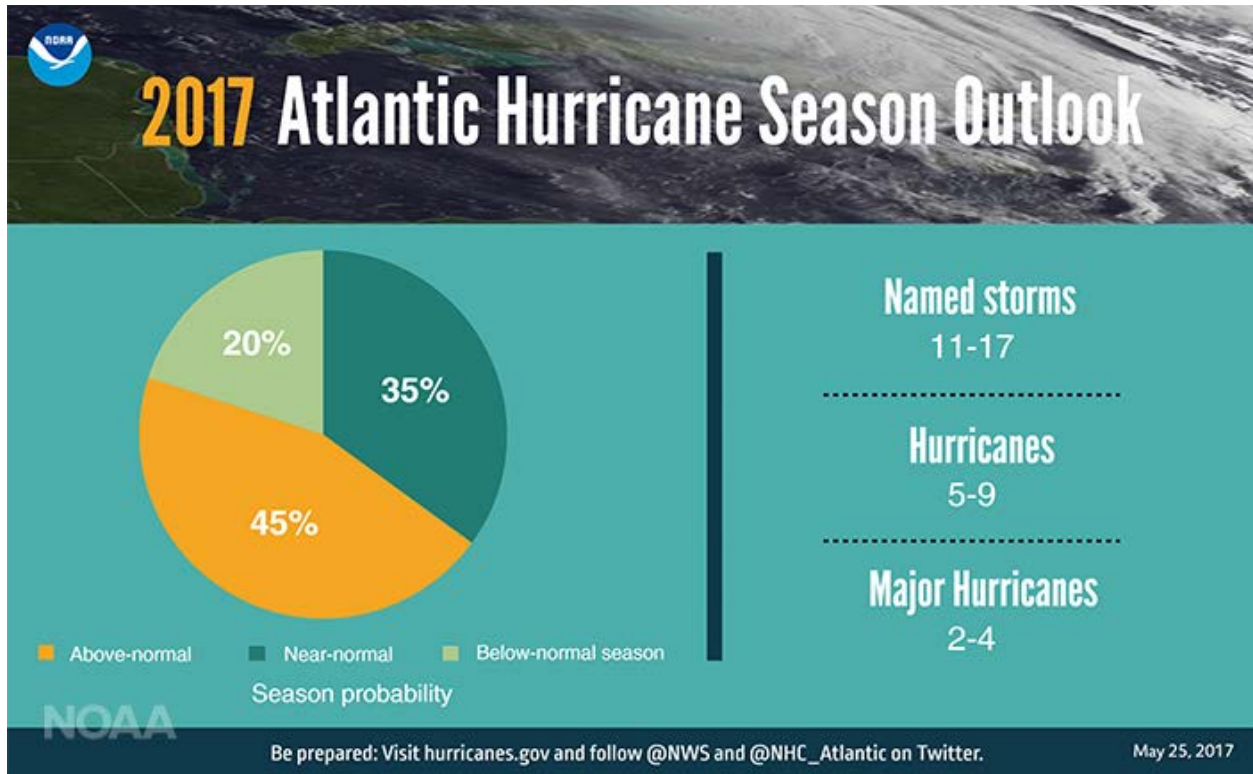
The other bills we were watching never stood a chance. They were either removed from the calendar or left pending in committees.



Annual rainfall total for the year is
13.64"



Pay attention to BURN BANS! It's dry out there!



[TXDOT Hurricane Info](#)

Hurricane Season has officially begun

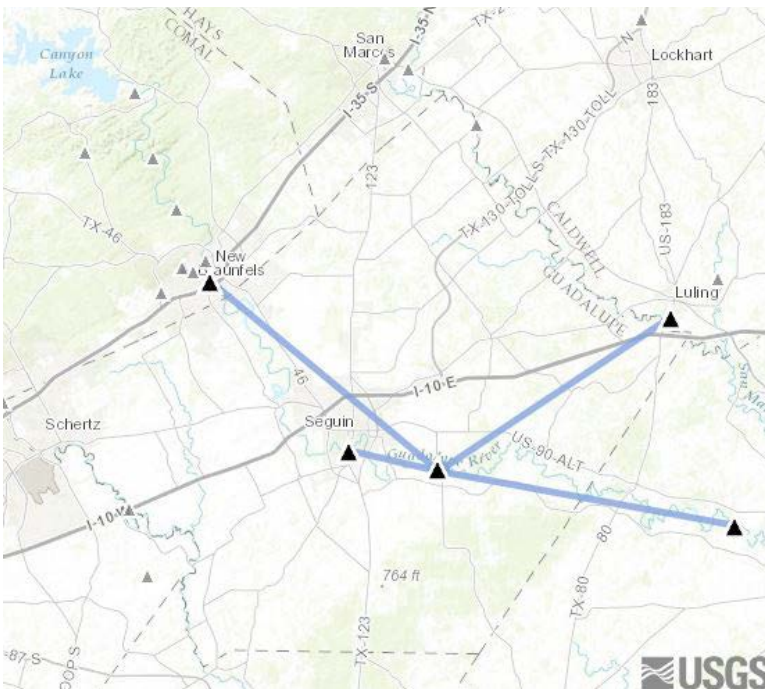
The first of June through the end of November marks the period where hurricanes typically develop in our area. Although Seguin is far inland from the coast where these storms typically make landfall, heavy rains can reach us and stall out over the area causing massive flooding and damage. It's always a good idea to have an "Emergency Kit" handy. Make sure you store bottled water (one gallon of water per person per day), non-perishable foods (can goods with easy open lids are ideal – if not, make sure you have a can opener), flash light, batteries, matches in a water proof case, first aid supplies, and a weather radio. For more tips on what to keep on hand for emergencies – download this [FEMA checklist](#) and check [Texas Emergency Preparedness](#)

Flooding Potential –

For those who live along the river or frequent low water crossings to get home (most of us!), pay close attention to the weather reports on local flooding. Be aware of fast rising water situations. Don't try and cross the road if it's under water. Never remove or drive around a barricade. Nearly half of all flood related deaths occur in vehicles. Nearly half of those are at night when visibility is poor, hiding debris and other dangers. Remember –six inches of water can cause you to lose control of your vehicle. Most cars will float in just two feet of water! Respect the force of the water. Be Smart. Stay Safe.



USGS has created a new mobile friendly website app enabling the user to get real time stream conditions from gages in Texas. You can now quickly locate the streams in your area, measure streamflow and height, rainfall and lake levels. This information can be critical during flood events but also very handy during normal conditions when you just want to know where the best place or time to go tubing, boating or fishing!



Update on GCGCD weather network system

So far...we have two sites up and on line!

SHWSC office and Grones Ranch are both live.

To see the current conditions, Go to



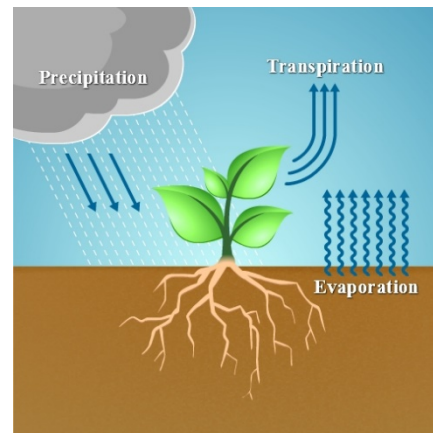
Stage 1 Water Conservation

We should always practice water conservation – not just during times of drought. The City of Seguin remains in Stage 1. Don't think of Stage 1 as a restriction, think of it as the way we should always use water, mindful of our consumption, reusing when possible and avoiding waste.

What does this mean for my lawn?

Watering of landscapes is only permitted during the hours of 8 pm and 10 am any day. This is the optimal time to water regardless of what stage of drought. Evaporation rates are low in the early morning hours. Watering during these times will provide your plants with the water they need to get through the heat of the afternoon when evaporation rate is the highest.

Determining how much water your plants need is important. This will stop the waste of water from overwatering and your plants will be healthier. To understand a plant's specific watering needs, one needs to understand EVAPOTRANSPIRATION. Evapotranspiration (Et) is the amount of water that is evaporated (lost) from the soil and transpired (transferred) through the plant's leaves. This is the amount of water that needs to be replaced through watering. To learn more about how much water your yard requires, consult a plant nursery or a master gardener.



Consider Xeriscaping



Planting drought tolerant vegetation could eliminate the need for supplemental watering. Saves water, time and money! And can be very beautiful.



Aquifer Levels

Water levels in the Carrizo aquifer for the period of June 2016 – June 2017 have declined a foot or more in Guadalupe County, which is a little more than expected. The largest Carrizo measured water level declines were in the CRWA area. Wilcox aquifer water levels are down slightly. Small to moderate long-term water level declines in the Carrizo aquifer are expected over time because of SSLGC, SAWS, SHWSC and CRWA well fields in Guadalupe and Gonzales Counties.

William B. Klemt, GCGCD Consulting Geologist, July 2017 report



State Well ID #	GCGCD #	Well Name	June 2016	June 2017	Change
CARRIZO					
67-27-401	2c	New Birth Baptist Church	24.97	26.81	-1.84
67-34-301	3a	Wells Ranch	128.09	131.23	-3.14
67-33-602	3b	Henk	115.90	116.73	-0.83
67-34-405	4	SHWSC - Mesa # 1	136.88	135.00	1.88
67-34-407	4a	Tiemann	117.64	117.73	-0.09
67-34-505	5	Deer Stand (BexarMet)	113.10	117.30	-4.20
67-34-706	6	E. Blumberg # 1	129.30	130.71	-1.41
67-33-906	6a	E. Blumberg # 2	143.55	144.46	-0.91
67-34-710	6c	Lakey	85.62	87.34	-1.72
67-33-803	8	Sandy Oaks Tavern	153.21	154.27	-1.06
WILCOX					
67-27-706	2	Kallies Farm	52.62	52.66	-0.04
67-27-110	2b	Ayotte	53.84	53.69	0.15
67-26-312	7a	Brady	167.17	161.89	5.28
67-19-708	7b	Carter - CCSUD	31.86	33.75	-1.89
67-18-8	7c	Baker	119.62	121.08	-1.46
67-25-709	9	F. Blumberg	54.54	53.38	1.16
67-25-910	9a	Ulrich	89.84	91.65	-1.81
68-40-204	10a	Vogel	26.79	26.81	-0.02
68-40-6	10c	Hierholzer	n/a	93.69	n/a

To see historical water level readings on the monitoring wells in the GCGCD program, past and present, visit our website at <http://gcgcd.org/monitoring-wells.html>

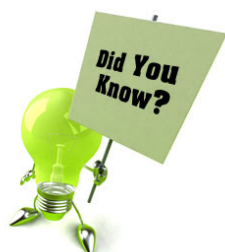
UPCOMING EVENTS –



- July 13th GCGCD board meeting – GVEC Community Room @ 4:30 pm
 July 28th TGWA board meeting – Embassy Suites, San Marcos, TX @ 1 pm
 Aug 10th GCGCD board meeting – GVEC Community Room @ 4:30 pm
 Aug. 3rd TWDB Region L meeting @ SAWS - 9:30 am
 Aug. 8-9th TCEQ Public Drinking Water Conference – Austin, TX
 Aug. 29-31st TAGD – Texas Groundwater Summit@ Embassy Suites, San Marcos, TX

Click to register!

TEXAS ALLIANCE OF GROUNDWATER DISTRICTS
TEXAS GROUNDWATER SUMMIT



CAR WASHING TIP: Washing your car at home uses about 100-150 gallons of water! Use a commercial car wash that uses recycled water instead. Commercial car washes on average use only 45 gallons.



Helpful Tip

Only run the dishwasher and washing machine when you have a FULL load.

This could save up to 1,000 gallons of water each month!!



Don't waste water by cleaning off patios or drive-ways with a hose. Get some exercise and use a BROOM instead!



GCGCD Board of Directors & Staff

Ron Naumann.....President, District 1.....ronnaumann@sbcglobal.net
 Jeff Schuehle.....Vice President, District 7.....jeff_schuehle@gcgcd.org
 Hilmar Blumberg.....Secretary, District 2.....hilmar_blumberg@gcgcd.org
 Charles J. Willmann.....Treasurer, District 5.....charlie_willmann@gcgcd.org
 A. Robert Raetzsch.....District 3.....raetzsch@gcgcd.org
 William Jones.....District 4.....bill_jones@gcgcd.org
 Hilmar Starcke.....District 6.....hil_starcke@gcgcd.org
 Kelley A. Vickers.....Executive Administrator.....kelley@gcgcd.org
 William B. Klemt.....Consulting Geologist.....billklemt@gmail.com

GCGCD

PO Box 1221
 Seguin, TX 78156
 830-379-5969
 113 S. River St. # 209
 La Plaza Building
 www.gcgcd.org
 gcgcd@gcgcd.org