



GCGCD NEWS



FALL 2020 Newsletter

Test Well to provide more data

As we finish up with the completion of MWCZ-1B, we begin the next, and *perhaps* final piece to this DFC Monitoring Well Project.

Back in 2018 when we began Phase One of this project, difficulties with loss of circulation during the drilling process prevented the logging of the MWCZ-2 site, off Hwy 123 South. With approval from the stakeholders and the Gonzales County Underground Water Conservation District's Board, funds from the stakeholders' permits held in GCUWCD will be used to complete the drilling and geophysical logging of a test well. This will not be completed to be an additional monitoring well. The crew at GeoProjects are working to mobilize next month and the folks from Geo Cam Inc. (water well camera and logging services) will be ready.

Once completed, GCGCD's consulting hydrogeologist, William B. Klemt will be compiling a detailed report containing all the data collected from the monitor wells located in Guadalupe County. Consultants from Daniel B. Stephens & Associates will be producing a full report on this project to include the monitor wells drilled in Gonzales and Caldwell Counties. Look to our website and Winter 2020/2021 Newsletter for more information.

A special THANK YOU to
EVERYONE involved in this project for EVERYTHING!



IN THIS ISSUE

Test well	pg. 1
GCD & Agency News	pg. 2
Association Updates	pgs. 2-3
Rainfall / weather	pg. 4
Production	pg. 5
Aquifer Levels	pg. 5
MWCZ-1B	pg. 6
Geophysical logs	pg. 7
Upcoming Events	pg. 8
Did you know?	pg. 8



WWW.GCGCD.ORG



Visit our website for more information!



Happy weather change everyone!

It is so nice to have these cooler temperatures for our upcoming field work. We completed the last well in the triple digits of August!

As the calendar year winds down – we will be busy compiling reports on all of the hard work we've accomplished this year. Be sure to continue to check our website for more information.



Kelley Vickers
General Manager

Wow – Seven plus months into this pandemic! As the holiday seasons are just around the corner – Please Stay Strong & Safe – Continue to follow guidelines & practice social graces.

Hopefully, this pandemic will end soon!

Kelley



Election Day is November 3rd

To locate polling stations, visit:

[Guadalupe County Elections Office](#)



November Seminar postponed

New Date – May 4, 2021

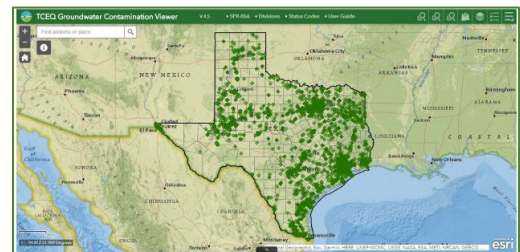
Register



The Railroad Commission of Texas recently received over half a million dollars from the Environmental Protection Agency (EPA) to protect groundwater from underground injection and disposal wells. The RRC serves Texas through stewardship of natural resources and the environment; concern for personal and community safety; and support of enhanced development and economic vitality for the benefit of Texans.

Texas Commission on Environmental Quality launched new on-line, Interactive map allowing users to access information relating to groundwater contamination cases.

[Access Viewer](#)



Download the [Joint Groundwater Monitoring and Contamination Report 2019 SFR-056/19](#)

Association
News

TAGD Groundwater Summit, went Virtual this year and was
Another Great Success!
Excellent, Informative Speakers - Engaging Panel Discussions
& fun virtual social events.



WEATHER + WATER – monthly reports available on [TWDB website](#)

“The [Texas Water Newsroom](#), produced by the Texas Water Development Board (TWDB), was created to tell the stories of Texas Water – the people, places, issues, and efforts – and to showcase the TWDB’s expertise and resources.”



Fall Conference was held virtually Oct. 21-23

Not a Member???
[JOIN NOW](#)

TWCA’s Mission - “To be a trusted resource promoting sound water policies for the state. Its mission is to educate members, build consensus among water stakeholders, and advocate solutions to Texas water matters.”

The **Texas Department of Licensing and Regulation (TDLR)** is reviewing the Water Well Drillers and Pump Installers program rules located at [Title 16, Texas Administrative Code, Chapter 76](#), for re-adoption, revision, or repeal.
This rule review is required every four years.

TDLR will determine whether the reasons for adopting or readopting these rules continue to exist by answering the following questions for each rule:

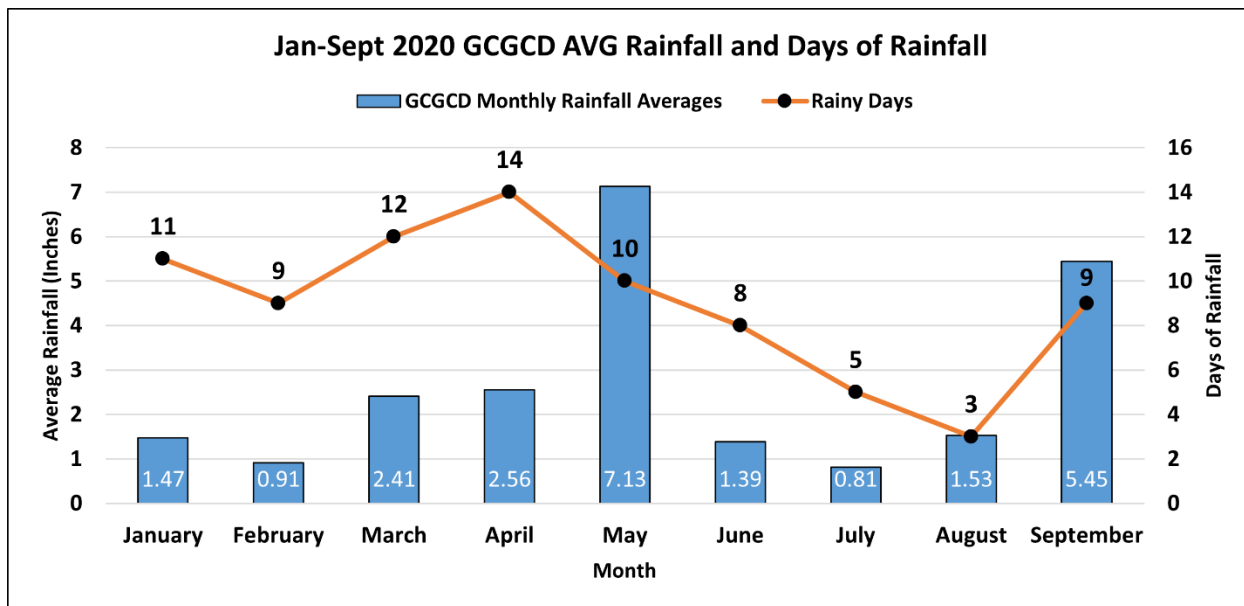
- Is it obsolete?
- Does it reflect current legal and policy considerations?
- Is it in alignment with the current procedures of the Department?



TDLR encourages anyone interested in the Water Well Drillers and Pump Installers program to [review the Notice of Intent to Review](#) and the [current program rules](#) posted on the Department’s website.

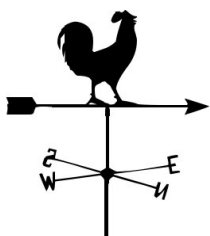
Comments may be submitted electronically on the TDLR’s website at <https://ga.tdlr.texas.gov:1443/form/gcerules> (select the appropriate chapter name for your comment).

Deadline to submit comments—November 9, 2020



2020 Hurricane Season Breaks 104 Year Record

As of this writing, the 2020 Atlantic hurricane season exhausted all 21 names set for this year by the National Hurricane Center (NHC). This season is the second hurricane season in history to use the Greek alphabet after the 2005 hurricane season which holds the record for the most active season on record. Currently, the 2020 hurricane season broke the 1916 record for most mainland US landfalls from named storms with a total of eleven thus far. If this hurricane season produces more storms passed the name Zeta, then this year will take the top spot for the most active Atlantic hurricane season in history.



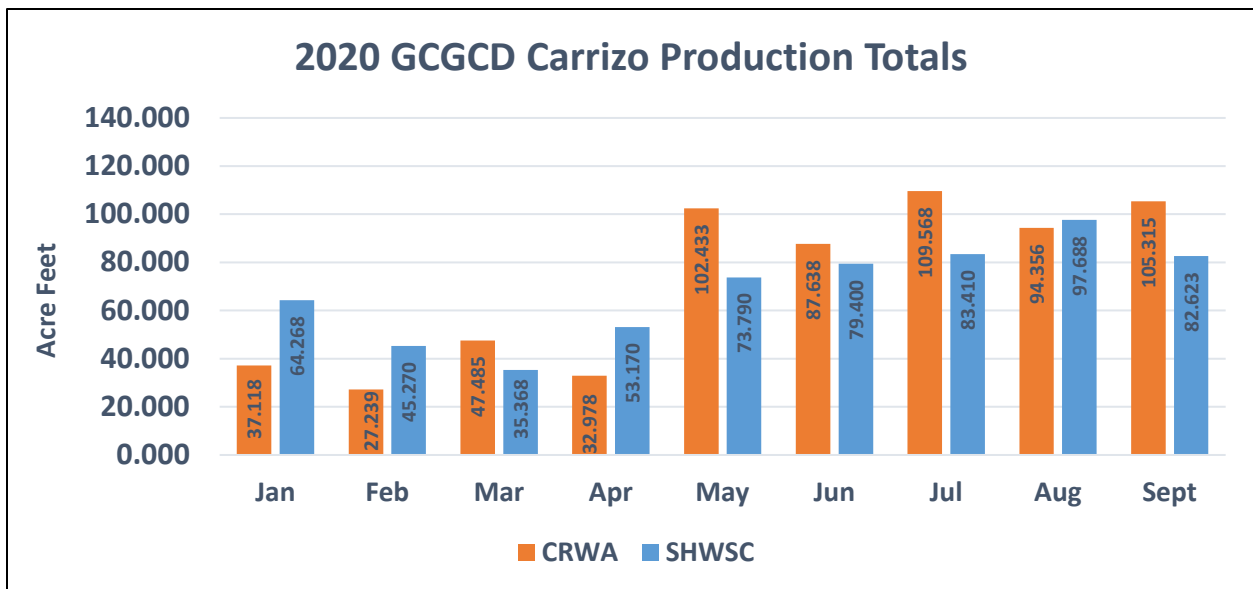
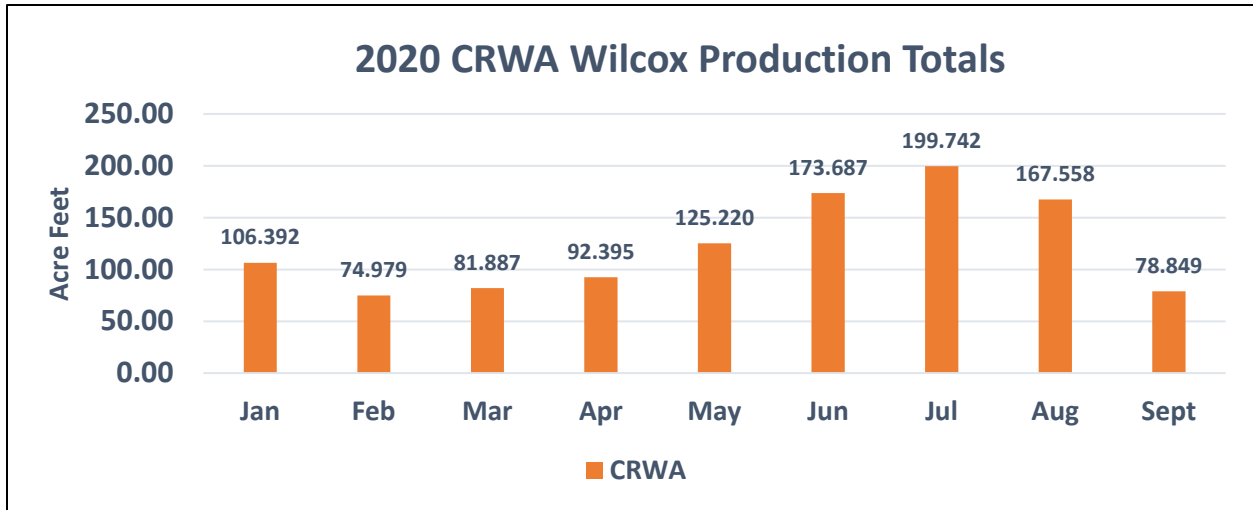
La Niña and its Effect on Texas

You may have heard a lot about La Niña this year and its effect on weather patterns and the ongoing 2020 hurricane season. First off, La Niña (translates to “the girl” in Spanish) refers to the phenomenon of cooling waters in the Pacific around the equator. This cooling pattern is associated with widespread changes in weather patterns that we can observe in Texas during the winter and spring seasons. La Niña is associated with a drier and warmer winter in Texas due to a lack of storm systems because the jet stream is positioned further north. La Niña is also connected to a more active Atlantic hurricane season because of a lack of vertical wind shear which provides a suitable environment for tropical systems to develop. Due to the drier conditions that a La Niña brings to Texas, it sets the stage for further drought growth and intensification which can lead to increased usage of water supplies. Increased evaporative loss and reduced river flow can have a negative impact on water supplies in Texas. Recent extreme Texas droughts such as in 2011 and 2006 have been associated with a La Niña event.

Source: “Ask an expert: A climatologist explains La Niña's impact on Texas” (October 2013). From [Texas Water Newsroom](https://www.texaswaternewsroom.com)



Production Amounts



[Water Level Report for September 2020 Summary](#)

Short Term (Sept. 2019 - Sept. 2020) - Carrizo water levels declined a little over a foot

Long term (2013-2020) - Carrizo water levels indicate normal moderate declines

To view the full report including water altitude maps visit our website:

<http://gcgcd.org/monitoring-wells.html>

William B. Klem
William B. Klem, P.G.

Photos from Monitor Well Site (MWCZ-1B)



Well development



Steve Bond setting equipment for aquifer test at MWCZ-1B



Fence constructed around wellhead at MWCZ-1B

Understanding the *Squiggly Lines*

Example Log
MWCZ- 1B

Of an Electric Log in the Carrizo/Wilcox Aquifer in Guadalupe County

Gamma Ray measures naturally occurring radioactivity from the formation.

Different types of rock emit different kinds and amounts of radiation. Gamma Ray logging is a way to characterize the sediment layers in a borehole.

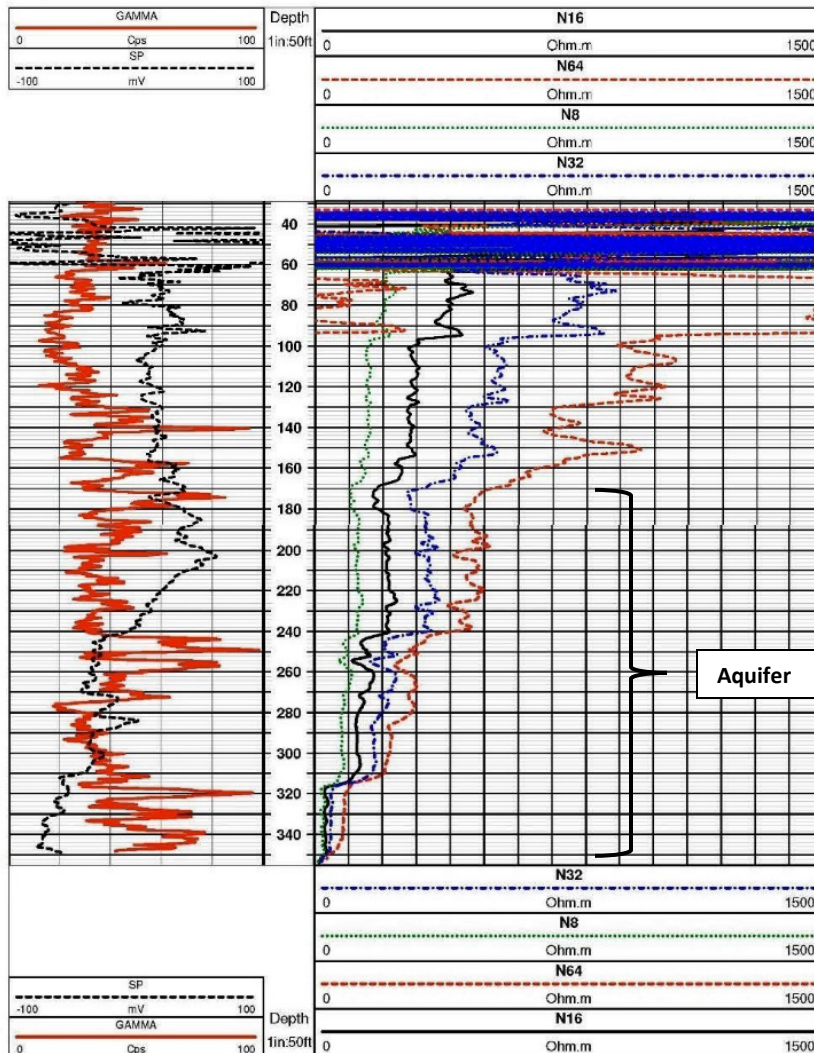
Resistivity measures how strongly a material impedes or *resists* the flow of an electric current - the opposite of conductivity.

Used to estimate thickness of formations & water quality - water containing mineral ions are good conductors of electricity and thus have low resistivity.

When the squiggly red line shifts to the left - that indicates less clay. Saturated thickness on this gamma log runs from 170 to 320 feet. At 320 feet, the gamma ray log indicates the base of the Carrizo Aquifer. Below 320 feet, transitions into the Wilcox Aquifer.

GAMMA


RESISTIVITY



The colored lines that are far apart indicate high resistivity or 'dry soil'. The water bearing material is indicated at 170 feet as the lines start to inch closer together.

Saturated Thickness
Base of Carrizo Wilcox Aquifer

UPCOMING EVENTS –

- November 3rd  ELECTION DAY – Cast your VOTE!
- November 5th Region L – Virtual - [check website](#) for details
- November 12th GCGCD board meeting – [check website](#) for details & Agenda
- November 13th GMA 13 Meeting – virtual 9:30 AM – [Agenda](#)
- November 26th – 27th GCGCD office closed in celebration of Thanksgiving!
- *At this time, there is no GCGCD Regular board meeting scheduled in December
- January 14, 2020 GCGCD board meeting



GCGCD Board of Directors & Staff

- Kelley A. Vickers – General Manager
kelley@gcgcd.org
- Omar Maldonado – Field Tech/Admin. Assistant
omar@gcgcd.org
- District 1 – Matt Miranda - Director
mattjmiranda@gcgcd.org
- District 2 - Hilmar Blumberg - Secretary
hilmar_blumberg@gcgcd.org
- District 3 - A. Robert Raetzsch – Director
raetzsch@gcgcd.org
- District 4 - William Jones – Treasurer
bill_jones@gcgcd.org
- District 5 – Mark Gustafson - Director
mark_gustafson@gcgcd.org
- District 6 - Hilmar Starcke III - President
hil_starcke@gcgcd.org
- District 7 - Jeff Schuehle - Vice President
jeff_schuehle@gcgcd.org



Are you a **Leaf Peeper?**

Did you know that there is a term for the activity of traveling to New England to view and photograph the fall foliage?

Leaf Peeping!



Attracting leaf peepers has become a multimillion-dollar marketing campaign. In 2009, 7.5 million leaf peeping tourists visited New Hampshire in the Fall and Vermont saw 3.6 million leaf peeping folks. If traveling to northern states is just too far of a journey – Texas has some leaf peeping spots – take a drive to the Lost Maples area. You can snap some photos of the changing leaves from the safety of your own vehicle.

Source: <https://mashable.com/2014/10/20/fall-foliage-tourism/>

New England is a region in northeastern US comprising six states – *Can you name all 6?*

Hint – I already gave you 2



Answer: ME, VT, NH, MA, RI, & CT



Don't forget to adjust your clocks!
November 1st
Fall Back One Hour